

TRITEC

ENERGY FOR A BETTER WORLD

TRI-STAND EARTHING SYSTEMS

TRITEC earthing components
for pitched roof PV systems.

- simple
- secure
- efficient

The main advantages:

- Effective earthing systems for optimum safety of PV systems on pitched roofs
- High-quality materials and robust construction for efficient protection
- Simple, quick and efficient installation
- Optimum design for different systems
- Suitable for all common TRITEC rooftop systems

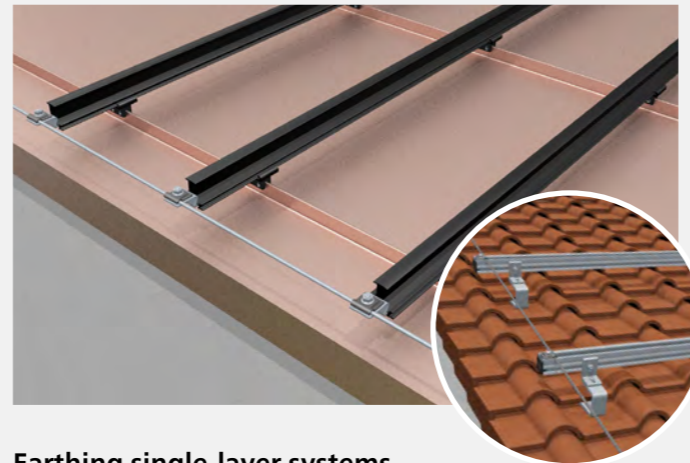
www.tritec-energy.com

VARIANTS OF EARTHING SYSTEMS

How to ensure efficient safety

An effective earthing system is essential for the safety of photovoltaic systems on pitched roofs. Our TRI-STAND earthing components offer a reliable solution that has been specially developed for the requirements of mounting solar modules. Thanks to high-quality materials and robust construction, they guarantee the necessary safety and durability under various conditions.

Earthing systems for different variants



Earthing of UP/IP base rails

The TS earthing terminals are installed in series on the base rails, close to the lowest insertion profile. The round wire is inserted securely into the TS earthing terminals and then screwed in place. The UNI earthing terminal is mounted directly on the earthing wire to ensure a reliable connection.

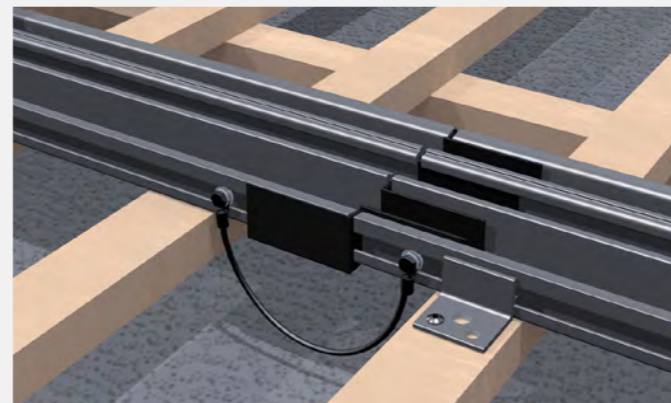
Earthing single-layer systems

The TS earthing clamps or TS earthing sets 4 are mounted in series at the end of each profile section. The round wire is inserted into the TS earthing clamps or TS earthing sets and then screwed in place. The UNI earthing terminal is mounted directly on the earthing wire to ensure a reliable connection.



Earthing of TS rail joints and vertical profiles

The TS earthing set 1 is used to connect all rail joints of the TS insertion profiles to ensure reliable earthing. In addition, TS earthing set 3 is used to create a secure connection between the TS rail sections and the vertical profiles.



Earthing of IP rail joints of the in-roof system







The base profiles of the TRI-ROOF+ in-roof system are securely connected at each joint connection with the TS earthing set 2 at each joint connection. This ensures a connection between the IP rail strands and ensures both effective earthing and increased protection.

THE EARTHING COMPONENTS





Safe and quick installation with few components

TRITEC earthing systems for single-layer and double-layer PV systems are suitable for various roof types and ensure reliable earthing with just a few components. The use of high-quality materials and a well thought-out design ensure compliance with current safety standards and minimise the risk of electrical faults.




Earthing components for 2-layer PV insertion systems

 <p>Aluminium round wire*</p> <p>Standard</p> <ul style="list-style-type: none"> Item no.: 1350051 1x per PV surface horizontally installed 	 <p>TS earthing terminal for UP- and IP base rail*</p> <p>Standard</p> <ul style="list-style-type: none"> Item no.: 1350052 1x per vertical profile strand 	 <p>Earthing terminal UNI</p> <p>Standard</p> <ul style="list-style-type: none"> Item no.: 1350062 1x per PV area
 <p>TS earthing set 1 (TS rail joint connection)</p> <p>Standard</p> <ul style="list-style-type: none"> Item no.: 1350020 1x per horizontal rail step 	 <p>TS earthing set 2 (connection IP rail joint for in-roof)**</p> <p>Standard</p> <ul style="list-style-type: none"> Item no.: 1350021 1x per vertical rail step 	 <p>TS earthing set 3 (connection TS rail track with vertical profile)**</p> <p>Standard</p> <ul style="list-style-type: none"> Item no.: 1350022 1x per horizontal track section

Earthing components for 1-layer PV insertion systems

 <p>Aluminium round wire*</p> <p>Standard</p> <ul style="list-style-type: none"> Item no.: 1350051 1x per PV surface installed vertically 	 <p>Earthing terminal UNI</p> <p>Standard</p> <ul style="list-style-type: none"> Item no.: 1350062 1x per PV area 	 <p>TS earthing set 1 (TS rail joint connection)</p> <p>Standard</p> <ul style="list-style-type: none"> Item no.: 1350020 1x per horizontal rail step 	 <p>TS earthing set 4 (connection TS rail strands to each other)</p> <p>Standard</p> <ul style="list-style-type: none"> Item no.: 1350053 1x per TS track
---	---	---	---

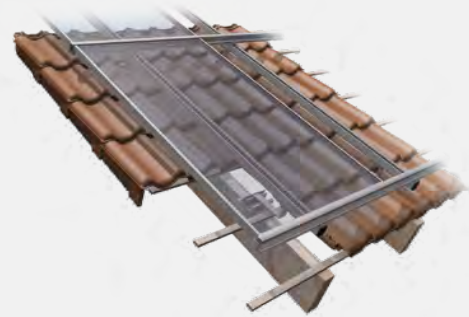
Earthing components for 1-layer PV clamping systems

 <p>Aluminium round wire*</p> <p>Standard</p> <ul style="list-style-type: none"> Item no.: 1350051 1x per PV surface installed vertically 	 <p>TS earthing terminal for UP- and IP base rail*</p> <p>Standard</p> <ul style="list-style-type: none"> Item no.: 1350052 1x per vertical profile strand 	 <p>Earthing terminal UNI</p> <p>Standard</p> <ul style="list-style-type: none"> Item no.: 1350062 1x per PV area
---	--	---

* For anodised profiles, it may be necessary to remove the anodised layer at the contact points to ensure electrical conductivity.
 ** The following accessories from the regular range are required for fastening: Hammer head screws and lock nuts.

LEARN MORE

Videos, planning and contact



Simply scan the QR code or visit the following link for more information about our PV mounting systems.

<https://www.tritec-energy.com/en/pv-mounting-systems/>



Just scan the QR code or visit the following link to watch the training video on our TRI-DESIGN planning software.

<https://www.youtube.com/watch?v=S9WGviC8x2I>

The optimal mounting solution for every roof

TRITEC mounting systems combine over 30 years of photovoltaic experience. Our own products TRI-STAND, TRI-ROOF+, TRI-CLIP and TRI-FLAT Easyspeed offer optimum PV mounting solutions for the various requirements of different roof types and alignments. We attach great importance to the high-quality processing of the components as well as to the durability of the substructure.

For further information on our products and services, please visit our website at www.tritec-energy.com or our online shop at shop.tritec-energy.com.

You can also contact our experts directly at any time, who will be happy to answer any questions you may have.

Contact us at
info@tritec-energy.com

Website & online shop
www.tritec-energy.com
shop.tritec-energy.com