



TRITEC

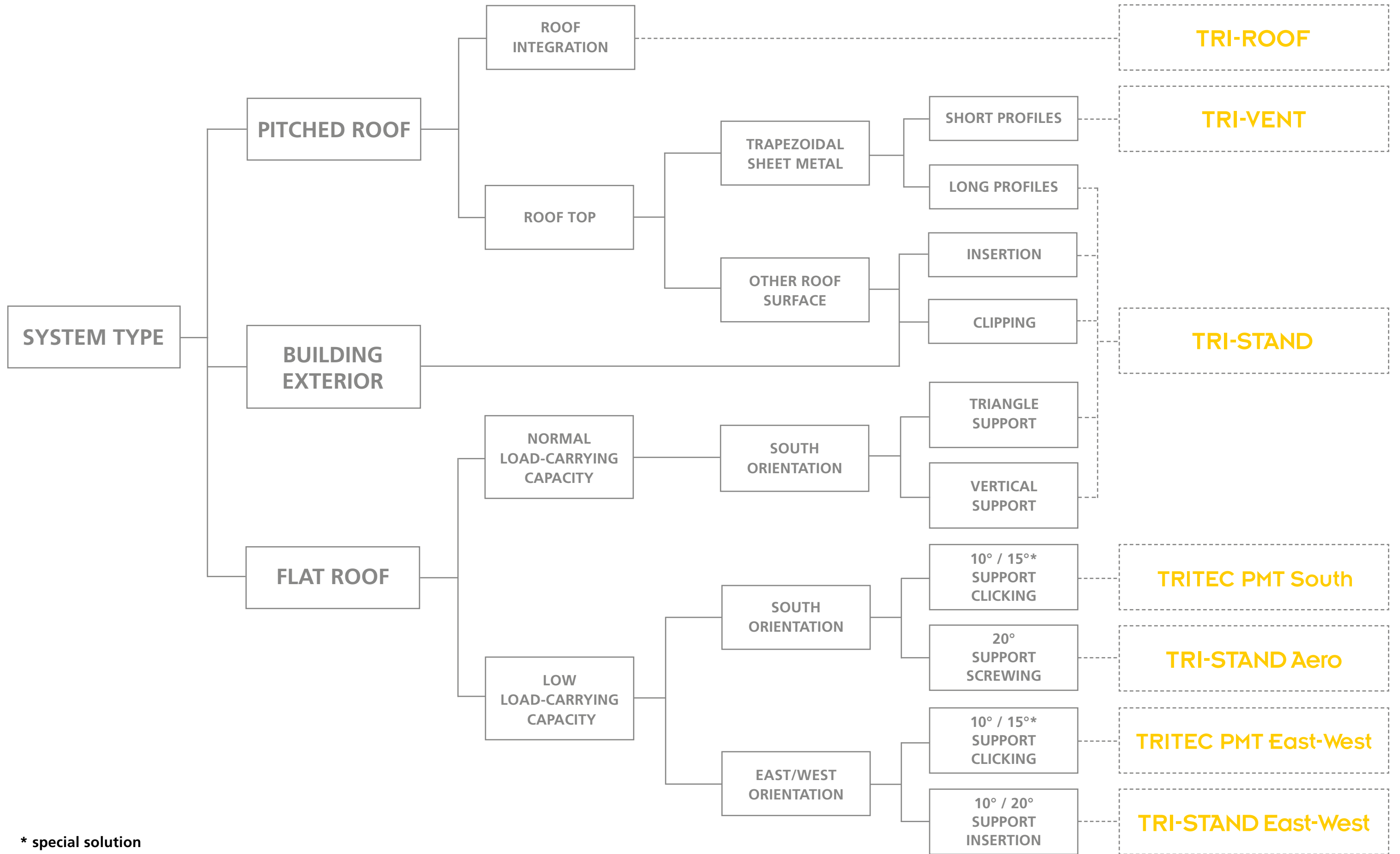
energy for a better world

TRITEC MOUNTING SYSTEMS

Clever Solutions for all system types

- Pitched roof
- Flat roof
- Roof integration
- Building exterior

No matter which system type, TRITEC offers the best mounting system



* special solution

Smart TRITEC mounting systems no matter which system type



Bernd Hertter, Product Manager Mounting Systems

TRITEC mounting systems combine more than 28 years of photovoltaic experience. The knowledge gained from the implementation of many solar systems leads to ingenious and convincing solutions for every roof type.

TRITEC guarantees highest quality and offers up to a 10-year product warranty for mounting systems and components. High quality aluminium and V2A stainless steel make TRITEC systems durable and resistant. TRITEC mounting systems are TÜV certified: Mechanical load tests according to IEC 61215 have proven that the assembly system and modules withstand tensile loads of 2,400 Pa, and pressure loads of up to 5,400 Pa without harm. Wind tunnel tests guarantee that our aerodynamically optimized systems withstand even extreme wind loads.

Our standards-conforming design guarantees maximum yields and utmost stability. With TRITEC's dimensioning software TRI-DESIGN, this is especially easy to realize – from the smallest to the largest PV system.

You can find all the TRITEC mounting systems and their varied uses in this overview.

PITCHED ROOF

Pitched roof

TRI-STAND



Insert or clip modules

With TRI-STAND, on-roof systems can be installed on virtually any type of roofing. With the insertion system, the modules are laid into the profiles without screwing. They stay in place solely by their own weight and by friction. The clip system is a particularly materials-saving and thus economical mode of installation for all framed types of modules.



- Insertion system: optimum load distribution and time-saving installation
- Clip system: low system costs per kWp
- Suitable for many types of roofs: tiles, shingles, corrugated sheets, sheet metal and fibre cement roofs



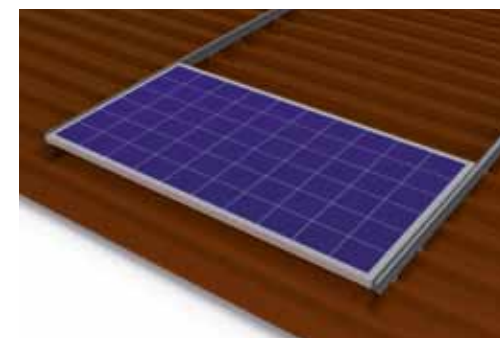
TS insertion profile

TRI-STAND



TRITEC Patented Solution

The insertion system is suitable for PV systems which are exposed to major wind and snow burdens on trapezoidal sheet metal roofs. The insertion profiles are clicked onto the profile connector SafeClick and are not rigidly connected with the roof. This will prevent damages due to thermal expansion, and impermeability of the roof is guaranteed.



- Simple installation by clicking in the profiles
- Optimum utilization of module loads
- Expansion joints protect against thermal expansion



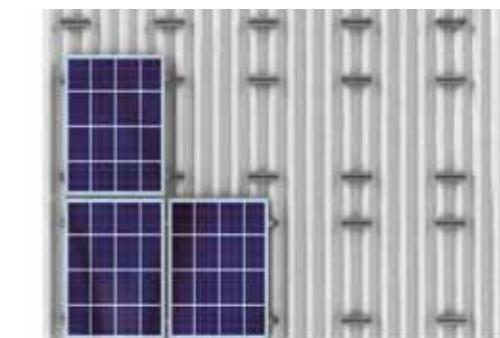
Rivet SafeClick

TRI-VENT



Efficient assembly

Without major tool use and with little material, TRI-VENT can be installed in the shortest possible time on trapezoidal sheet roofs. Short profiles ensure minimum weight and minimal thermal expansion. Screwing is completely unnecessary since the profiles are riveted directly onto the roofing.



- Ideal for uneven or old roofs
- Fastening without screws
- Upright or horizontal installation of modules



TRI-VENT module anchor

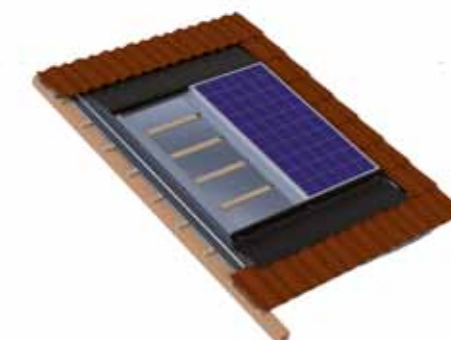
Roof Integration

TRI-ROOF



Flexible solution for aesthetic systems

Aside from its visually attractive installation, TRI-ROOF provides virtually unlimited freedom of selection of framed modules. The mounting system is supplied as a complete set and – in addition to profiles and insert rails – also comprises, as a standard, the edge connectors for tiled roofs.



- Compatible with all framed modules from the TRITEC product range
- Easy replacement and maintenance of modules
- Special profiles for maximum impermeability



UP-I universal profile

FLAT ROOF

Normal load

TRI-STAND



Application for special cases

The TRI-STAND flat roof supports are characterized by their outstanding stability. The triangle support is a versatile variant which is also suitable for pitched roofs with minor inclinations. The vertical support is mounted with a distance to the roof and is used in areas with heavy snowfalls; also, on green roofs or on roof areas with obstacles.



- Triangle support: flexible choice of angles from 20° to 70°
- Vertical support: Reduction of shading and unevenness, 20° or 30° support
- Insertion system for fast installation



TRI-STAND FlexFix angle for triangle support

Load optimised

TRI-STAND Aero



Smaller loads, less costs

TRI-STAND Aero was specifically developed for roofs with small load capacities. The mounting system provides advantages not only in terms of weight but also in terms of costs. Due to the use of TS-F mounting angles, both the number of components and the time of installation are reduced.



- Time-savings with pre-mounted supports
- Support angle 20°
- Designed for modules in widths of 790 – 810 mm and 990 – 1010 mm



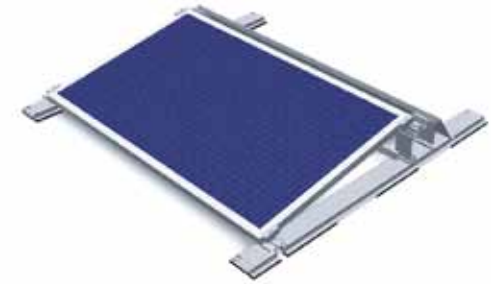
TS-F angle

TRITEC PMT South



Shortest mounting time with high stability

Optimized not only in terms of loads but also in terms of transportation, mounting time and stability. TRITEC PMT components are stackable and palletisable. The innovative Click technology provides for swift installation on site. The optimized load distribution verified by several testing institutes offers stability and safety.



- Support angle of 10° (special 15° solution possible)
- Short click components in small numbers
- Optimum load distribution and lowest ballasting



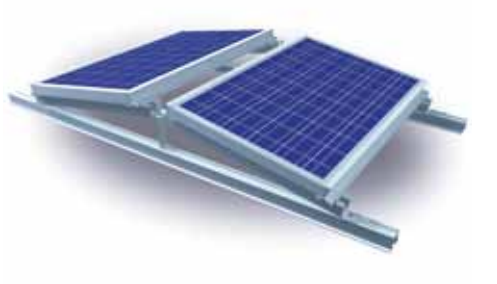
Base 10°

TRI-STAND East-West



Proven components

TRI-STAND East West is based on components which have proven themselves in many years of practice, as well as in the TÜV test. The modules can be mounted both in the insertion system and in the clip system. The plug-in system and the use of long rails enable uncomplicated mounting within the shortest time possible – without damaging the roof membrane.



- Support angle 10° or 20°
- Applicable for major snow and wind loads
- Visually appealing due to concealed ballasting



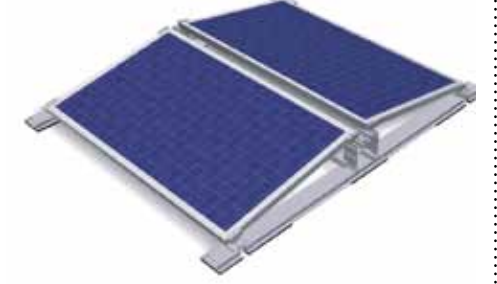
TRI-STAND ballast sheet metal

TRITEC PMT East-West

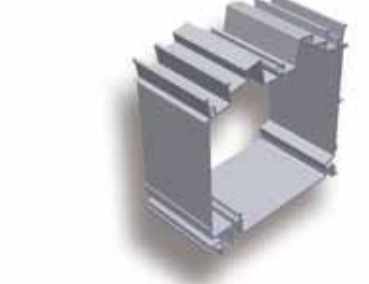


The flat roof mounting system with maximum economic efficiency for large-scale photovoltaic systems

The East-West variant of the TRITEC PMT system is also designed for an extremely short mounting time with high stability. Due to these characteristics, TRITEC PMT is particularly suitable for large flat roofs and here offers maximum economic efficiency.



- Support angle of 10° (special 15° solution possible)
- Short click components in small numbers
- Optimum load distribution and lowest ballasting



Cube 10°

BUILDING EXTERIOR

TRI-STAND



Utilizing any surface for PV

Solar energy can be generated even without any suitable roof area. The flexible FlexFix angle is also used for PV systems on facades. Thus, for example, black anodized insertion profiles provide an aesthetic canopy roof system.



- Low module load when installed on building exteriors
- Flexible angle selection from 20° to 70° for canopy solutions
- Freely selectable degree of rear ventilation



Black anodized TS insertion profile

Quality and safety

We guarantee our clients that all profiles and accessories of the TRITEC mounting systems have a 5 year manufacturer's guarantee from the delivery date, regarding soundness and technical functional capability. TRITEC regularly organises customer trainings for guarantee extension up to 10 years.

For the complete Guarantee Certificate, the Certificate of No Objection and the next training dates, visit our web site. www.tritec-energy.com

