

Quality and Safety

We guarantee our clients that all profiles and accessories manufactured under the original label TRI-STAND Aero have a 5 year manufacturer's guarantee from the delivery date, regarding soundness and technical functional capability.

Extension of manufacturers guarantee: All installers, who have successfully attended a TRI-STAND intensive training course, receive a guarantee extension of 10 years in total.

For the complete Guarantee Certificate and the Certificate of No Objection, visit our web site at www.tritec-energy.com/tri-stand-aero-en

www.tritec-energy.com

TRITEC

energy for a better world

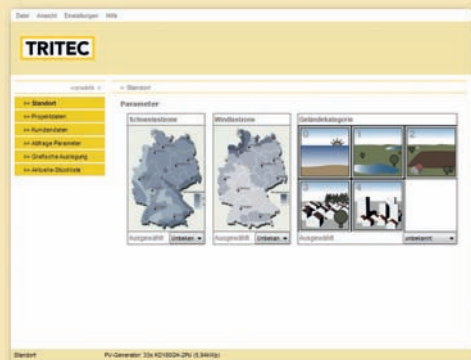


Company Stamp:

TRI-STAND AERO

The aerodynamically optimised photovoltaic mounting system for large flat roofs

- Quick and easy installation
- Little extra load
- Small shading distances



Simple design using clever software
Photovoltaic systems are exposed to strong forces. In addition to their own weight, the system components and sub-structure experience great wind forces and snow loads. Therefore, each system is calculated and designed for its individual requirements using the TRITEC design software TRI-DESIGN.



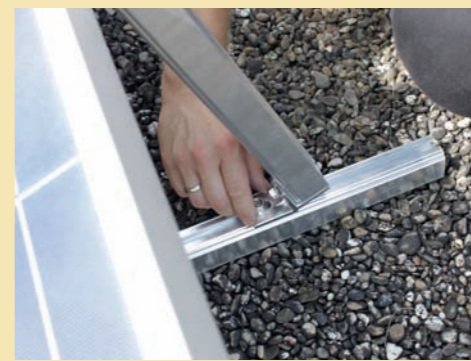
Ensuring safety
On principle, the structural calculations of all roofs must be checked by authorised experts. An additional basic requirement for the installation of photovoltaic systems on roofs: The current condition of the roof must be such, that renovation will not become necessary for a period of at least 20 years.



Both Exceptionally light and stable
TRI-STAND Aero was specially developed for flat roofs whose structural condition requires lighter loads. Components made of aluminium and the TS-F bracket to attach the profiles ensure maximum stability and reduce both weight and material.



Quick, easy and cost-efficient
The installation of TRI-STAND Aero is quick and easy and so also very cost-efficient. It is set up in as few as five steps and only requires 1,5 man-hours per kW. None of the wind deflectors are expensive customised components. The mounting system is designed for standard modules with a width of 790–810mm and 990–1010mm.



Protected roof membrane
The UP-L profiles are placed either directly onto the pebbled flat roof or provided with a protective strip to protect the roof from mechanical impact. Neither option requires screwing in place on the roof. The roof membrane therefore remains intact.



Less shading, more output
The PV modules are supported at an angle of 20 degrees. This reduces the shading distances while the output per square metre increases.